

ACEC NEWS

NOVEMBER 2022 | VOLUME 25 | ISSUE II





**A MESSAGE
FROM**
*Your
General
Manager*

Hollie McCormick
EVP/General Manager

COST OF SERVICE STUDY

Allamakee-Clayton's Board of Directors has authorized a cost-of-service study to be conducted by the rate specialists at STAR Energy Services. This cost-of-service study is now underway. The study will provide analysis of our rate classes. The main purposes of a cost-of-service study is to review ACEC's electric rates and basic service charges to ensure that we can maintain a solid financial condition, provide the necessary revenue for delivery of reliable electric service, and avoid subsidization between rate classes. STAR will report their conclusions in the first quarter of 2023 and offer recommendations to the Board for discussion and consideration.

Our last rate adjustment was May 1, 2020. We are happy to report that due to sound financial planning, your co-op was able to stretch what was designed to be a two-year rate to a three-year rate. Unfortunately, much like you, our costs have risen significantly. The current economic climate is presenting multiple challenges. As a not-for-profit, member-owned cooperative we strive every day to hold down costs, while still providing you with reliable, quality service you expect. However, doing so has become increasingly difficult over the past two years.

Our G & T Cooperative, Dairyland Power, is working with its member cooperatives to try to keep their impending rate increase as moderate as possible, but the reality is that there will be an increase in our wholesale power bill. We will feel it and have to make adjustments of our own. Given the continued volatility in the natural gas and locational marginal pricing (LMP) markets and the upward pressure caused by inflation and interest, we will need to increase rates. However, manageable adjustments are always our goal.

The times are interesting, to say the very least. However, there is still much to be thankful for. I am thankful for my family, good health, the hardworking staff, and board at ACEC and the ability to keep the lights on for our members. Wishing you all a Happy Thanksgiving. ■

Power Cost Adjustment Explained

What is power cost adjustment (PCA)? As you monitor your electric usage on your monthly bill, you may be wondering what the (PCA) is and why it appears on your electric bill each month. You are not alone. Many co-op members wonder the same thing.

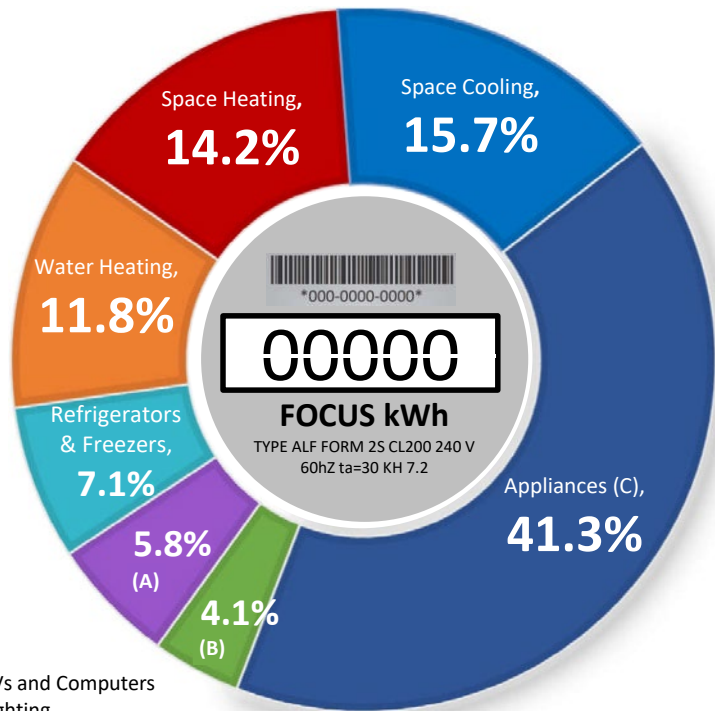
Current Bill Information		
BASIC SERVICE CHARGE		39.00
ELECTRIC USAGE CHARGE	500 kWh @ .1230	61.50
POWER COST ADJUST.	500 kWh @ .0134	6.70
SECURITY LIGHT		8.00
OPERATION ROUND UP		0.80
Total Current Bill		\$116.00

Example: Member bill with Power Cost Adjustment Line highlighted in yellow.

Understanding Power Cost Adjustment: When the cooperative sets the rates, it is based on the cooperative's operating expenses. The cost of purchasing power is the largest expense, roughly 55 percent of total expenses.

The PCA or Power Cost Adjustment is used to account for monthly variations in the price of power. It is positive or negative based on the cost of power charged to ACEC from our power supplier, Dairyland Power Cooperative. Our PCA has been negative for most of the past year, resulting in savings for our members. However, due to rising power costs incurred by our power supplier, PCA will be positive for the remainder of this year. PCA can be calculated by multiplying the PCA factor listed on your bill by the number of kilowatt-hours you used for the month. ■

HOME ENERGY USE
WHERE DOES YOUR ENERGY GO?



- (A) TVs and Computers
- (B) Lighting
- (C) Includes clothes washers and dryers, small appliances and other electrical equipment.

Home energy use is different for everyone and hinges on several factors, including size of home, members in your household, your location and preferences. Knowing your energy use will help you prioritize your energy saving habits.

Source: U.S. Energy Information Administration. www.EIA.gov.

Allamakee-Clayton Linemen Practice Pole Top Rescue

Throughout the year, Allamakee-Clayton Electric Cooperative employees participate in various training that enables them to take appropriate action in an emergency. ACEC linemen picked a nice day last month to buckle on fall restraint equipment, dig into utility poles and begin their annual pole top rescue exercises.

As a safety training requirement, the course is designed to evaluate each lineman on his ability to properly rescue an injured and/or stranded lineman. Each lineman must balance his skills with safety, climb a pole and rescue a 165-lb. training mannequin. The lineman must then secure the mannequin using a rope and safely deliver the mannequin to the ground. #6585



While today's ACEC linemen have never had to perform a pole top rescue in the field, the training is an opportunity for the linemen to prepare and hone their skills if the need should ever arise.

Ben Grangaard, first class lineman, starts preparing for his rescue exercise.



First class lineman, Andrew Henderson, was the final man to complete his pole top rescue that day.



Staci Malcom, FirstCall Customer Service Representative, attended the Caregiver Wellness Day at NICC in Calmar. Local agencies shared information about their services and provided resources for the senior population. FirstCall can assist you or your loved ones to maintain independence with our emergency response system that is activated by a fall or by pressing a button. Contact Staci for more information on FirstCall at (888)788-1551.



Snowbirds

Leaving for the winter?

Please call the Co-op to notify us of your temporary address and to make billing arrangements while you're away.



BOARD BRIEFS | October 31, 2022 Meeting

- Approved a \$66,000 RLF Economic Development Loan to K9 Country, LLC for dog boarding, daycare, and grooming facility.
- Approved a Cost Share Application with Dairyland Power for the Postville Public Library to assist with educational, multilingual community information board.
- Reviewed Power Cost Adjustment (PCA) Information
- Approved 2021 IRS 990/990T Tax Returns
- Approved 2022 Patronage Capital Retirement
- Approved updates to the coop Board Policies #7-6 Nepotism and #9-7 Smoking, Vaping and Smokeless Tobacco Use
- Darrin Lynch, Regional Vice President for the coop's lender CFC, presented key financial metric information.

Heat and Cool Your Home with a Heat Pump



If you're looking for an energy efficient upgrade that will save you money on your electric bills, consider a geothermal heating and cooling system. With a federal and state tax credit, there is no better time to install this HVAC system!

Why is a geothermal heat pump so energy efficient?

A geothermal heat pump (sometimes also referred to as a ground source heat pump) is a highly efficient renewable-energy technology that is used for both residential and commercial buildings. Geothermal heat pumps are used for space heating and cooling as well as water heating.

The technology relies on the fact that the earth (beneath the surface) remains at a relatively constant temperature throughout the year, warmer than the air above it during the winter and cooler than the air in the summer, very much

like a cave. The geothermal heat pump takes advantage of this by efficiently transferring heat stored in the earth or in ground water into a building during the winter and transferring it out of the building and back into the ground during the summer. The ground acts as a heat source in winter and a heat sink in summer.

Using a geothermal system is also great for your wallet! **#4532**

Data from the Environmental Protection Agency shows that homeowners **save 30-70% on heating costs and 20-50% on cooling costs by using geothermal heat pumps compared to other conventional systems. This translates to roughly \$400 to \$1,500 in annual savings.**

Installing a geothermal system involves adding an underground loop system, which makes the installation cost more expensive up front compared

to conventional HVAC systems. Homeowners can utilize federal and state geothermal tax credits to help offset these installation costs. Additionally, Allamakee-Clayton Electric Cooperative offers energy efficiency rebates on heat pumps. For more information on heat pump rebates, visit our website at acrec.com or contact our office at 563-864-7611. ■



PLUGGED IN: Electric Vehicle Update

OCTOBER

Number of miles driven: **681 miles**

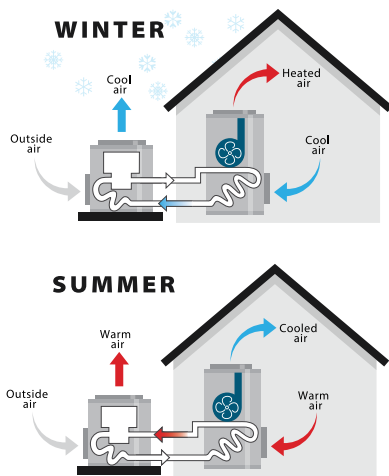
Level 2 charger @ACEC: 281 kWhs x \$12.3 cents

Cost to Charge: **\$34.56**



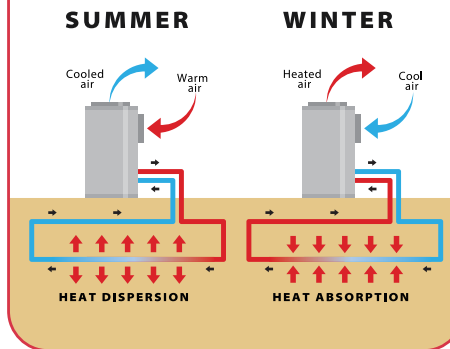
air-source HEAT PUMP

- **Pulls heat** indoors from the outdoor air in the winter and from indoor air in the summer
- When properly installed, requires **little maintenance** and delivers 1.5-3.5 times the energy it uses
- **Easy to convert** from propane or oil system
- More **efficient** than gas
- **Dehumidify better** than standard central air conditioners, resulting in **less energy usage** and more cooling in summer months
- Possibly eligible for energy-efficiency rebates and incentive heat rate



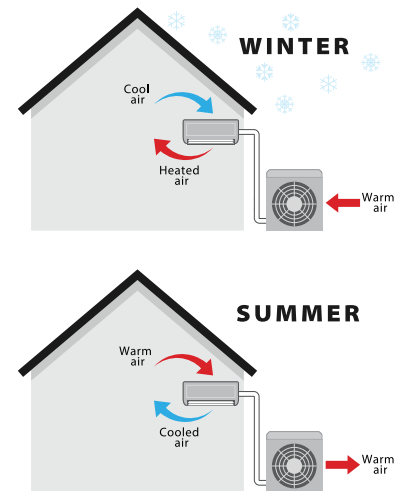
ground-source HEAT PUMP

- **One system** for heating, cooling, and water heating
- Uses the abundant, **natural energy** the earth stores beneath us
- **Highest efficiency**, documenting heating efficiencies of up to **500%**, meaning homeowners get \$5 of heating for every dollar they spend
- Excess heat energy can be routed to the water heater, **saving** homeowners **two-thirds** of their water heating costs year-round
- Higher installation costs than standard forced-air furnace and central air conditioner, but **shorter payback periods** because of increased operating efficiency
- Possibly eligible for energy-efficiency rebates, incentive heat rate, tax credits and a Homeward, Inc. low-interest loan



mini-split/ductless HEAT PUMP

- Like an air-source heat pump, but **smaller**
- **Ductless**, so works on houses that don't have duct work
- **Cost effective** and **easy to install**
- Only runs when and as hard as it needs to, thus is **extremely energy efficient**
- Scalable so one outdoor compressor can **run multiple units** inside
- Ideal for those who want **air conditioning** in homes that don't currently have it
- Possibly eligible for energy-efficiency rebates



Allamakee-Clayton Electric 2022 Heat Pump Incentives:

INCENTIVE INFORMATION (Please fill in gray shaded boxes for requested incentives)

Equipment	Specifications	Size <small>Size is based on 12,000 btuh/ton If < 1 ton, round up to nearest ¼ ton If > 1 ton, round up to nearest ½ ton</small>	Quantity	Incentive	Total <small>Size x Quantity x Incentive</small>
Heat Pump - Air Source & MiniSplit	SEER 14+, HSPF 8.2+, or EER 11+			\$300/ton	
Heat Pump - Commercial Air Source & PTHPs	< 20 ton: EER 11+ 20 to < 60 ton: EER 10.5+ ≥ 60 ton: EER 10+			\$300/ton	
Heat Pump - Geothermal				\$500/ton	

INCENTIVE REQUIREMENTS:

New equipment must be installed on the cooperative's lines. Incentive not to exceed the equipment cost.

Required documentation listed below must be submitted no later than 3 months after installation date:

- 1) Incentive form – forms available at acrec.com,
- 2) a copy of your receipt or invoice for each item with purchase price(s) circled,
- 3) documentation showing the equipment has been installed.



— REMINDER — 2022 REBATES

Rebate requests
must be
submitted by
December 29, 2022.

Iowa LIHEAP 2022-2023 Guidelines

Residential Members: Help with Your Heating Bill

The 2022-2023 Low-Income Home Energy Assistance Program (LIHEAP) has been established to help qualifying low-income Iowa homeowners and renters pay for a portion of their primary heating costs for the winter heating season. The assistance is based on household income, household size, type of fuel, and type of housing.

WHEN TO APPLY:

- * Elderly (60 & over) and/or disabled October 1, 2022 to April 30, 2023
- * All other households November 1, 2022 to April 30, 2023

WHAT TO TAKE:

- * Proof of Income (for all household members age 18 and over) Depending upon your household income type, income documentation from the past 30 days, the last 12 months, or last calendar year, whichever is easier or more beneficial for you.
- * Social Security numbers for all household members (documentation required)
- * Most recent heat bill
- * Most recent electric bill

WAGE EARNERS:

Please bring copies of your check stubs for the 30-day period preceding the date of application, or a copy of your federal income tax return.

FIXED INCOME:

This income may include: Social Security Benefits, Supplemental Security Income, Family Investment Program, Veteran's Assistance, Unemployment Insurance, and pensions. Please bring copies of your check stubs from the previous 30 days.

SELF-EMPLOYED/FARMERS:

Please bring a copy of your most recent federal income tax return.

FIP RECIPIENTS:

Please bring your current DHS Notice of Decision or contact your local office for acceptance document information.

If you receive alimony or child support, it will also need to be verified. Additional income not listed here may be required.

Contact the local community action agency in your area as listed below:

Allamakee County:

Waukon 955 3rd Ave NW (563) 568-4224
 Postville 134 W Greene St. (563) 380-2780

Clayton County:

Elkader 600 Gunder Rd NE (563) 245-2452

Fayette County:

West Union Courthouse Basement (563) 422-3354
 Oelwein 297 5th Ave Sw (319) 283-2510

Winneshiek County:

Decorah 305 Montgomery St. (563) 387-4958

Income Maximums

Household Size	Annual Gross Income
1	\$27,180
2	\$36,620
3	\$46,060
4	\$55,500
5	\$64,940
6	\$74,380
7	\$83,820
8	\$93,260

Note: For households with more than eight members, add \$9,440 for each additional member.



PUMPKIN CAKE

(Arlene Reimer)

- 4 eggs
- 1 - 16 oz can pumpkin
- 1 tsp salt
- 1 can evaporated milk
- 1 1/2 sugar
- 2 tsp. pumpkin pie spice

1. Mix above ingredients. Pour into 9x12 pan (not greased).
2. Sprinkle the wet ingredients with dry yellow cake mix.
3. Top with 2 sticks melted butter and 1 cup pecans. (Note, I cut off 1 Tbsp of butter though!). Seems perfect that way... otherwise it's too rich!
4. Bake at 350° for an hour and 15 minutes until firm.
5. Serve with Cool Whip! Enjoy!

PUMPKIN CHIFFON PIE

(Theresa Rodas)

- | | |
|--------------------------------|----------------------|
| 2 envelopes unflavored gelatin | 1 c. milk |
| 1 c. sugar | 1/4 tsp. salt |
| 1 c. pumpkin | 3/4 tsp. ginger |
| 3/4 tsp. cinnamon | 1 tsp. vanilla |
| 1 9" baked pie shell | 1 c. whipped topping |

Sprinkle gelatin over milk in saucepan to soften. Then cook over low heat (do not boil). Stir until gelatin is completely dissolved. Mix sugar, salt and spices; stir into hot milk. Stir pumpkin and chill until partially thickened. Beat until fluffy. Fold in vanilla and whipped topping. Spoon mixture into baked crust. Chill. Garnish with additional whipped topping and pecan halves if desired.

PUMPKIN COOKIES

(Nancy Moon)

- | | |
|--------------------|-------------------------------|
| 1 c. brown sugar | 1 c. cooked or canned pumpkin |
| 1/2 c. oil | 1/2 t. nutmeg |
| 1 t. vanilla | 1/4 t. ginger |
| 2 c. flour | 1 c. chocolate chips |
| 1 t. baking powder | 1 t. soda |
| 1/2 t. cinnamon | 1/2 t. salt |
| 1/2 c. nuts | |

Beat together sugar, oil, pumpkin, vanilla in a mixing bowl. Mix dry ingredients together and add to bowl. Stir until smooth. Add chocolate chips and nuts and stir. Drop by spoon onto greased cookie sheet. Bake at 350° for 10-15 minutes. Makes about 3 dozen. I usually double this as they don't last long at our house.

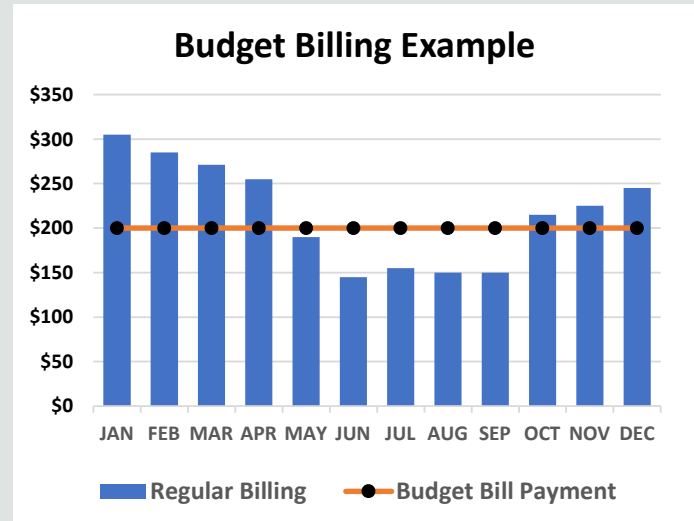
BUDGET BILLING

Control your energy bill with a fixed monthly payment.



What is Budget Billing?

Budget Billing helps make your electric bill predictable. With Budget Billing, your monthly electric payment for 11 months is based on your prior year's usage. The amount you pay stays the same each month. During the 12th month (what we refer to as your settlement month), your bill is based on actual usage and is adjusted to reflect any over or underpayment from the prior 11 months. #1502-17



There are several ways you can enroll:

- Contact our office at (563) 864-7611.
- Complete and mail in the budget billing form below.

YES, tell me my monthly budget amount.

Name: _____

ACEC Account No.(s): _____

Address: _____

City _____ State: _____ Zip: _____

Daytime Phone: _____

Email: _____

Mail form to: ACEC | Billing | PO Box 715 | Postville, IA 52162

FIND YOUR SERVICE NUMBER

ACEC has hidden three Service Location numbers within this newsletter. The numbers are from three different regions of our service area – there are three **\$5** bill credits, if found. The Service Location number must be yours to claim the credit, and you need to notify us when you find it by calling the office at 563-864-7611.



CONTACT ACEC

HEADQUARTERS

229 Highway 51 • PO Box 715
Postville, IA 52162

PHONE NUMBERS

LOCAL 563-864-7611

TOLL-FREE 888-788-1551

PAYMENT LINE 24/7 833-284-5051

UNDERGROUND CABLE LOCATING
811

SKYWAYS INTERNET SOLUTIONS

800-864-1611

WEBSITE

acrec.com

OFFICE HOURS

Monday - Friday 7:30 a.m. - 4:00 p.m.

OUTAGES

888-788-1551 or 563-864-7611

IOWA STATE ONE CALL

811

BOARD OF DIRECTORS

JEFF BRADLEY, President, Wadena

MICHAEL D. GIBBS, Vice President, Waterville

CINDY HEFFERN, Sec./Treas., Harpers Ferry

ROGER ARTHUR, Sumner

NELSON CONVERSE, Postville

GREG FORMANEK, Farmersburg

JERRY KELEHER, Elkader

AL STEFFENS, Clermont

BRICE WOOD, Lansing

MANAGEMENT STAFF

HOLLEE McCORMICK, EVP/General Manager

DAVID DECKER, Director, Finance &
Administrative Services

BRENDA HACKMAN, Manager, Economic
Development & Community Relations

JENI KOLSRUD, Manager, Information Technology

JASON TROENDLE, Director, Operations &
Engineering

RYAN WAGNER, Manager, Member Services



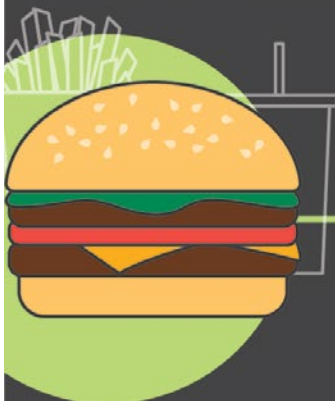
Allamakee-Clayton Electric Cooperative, Inc.
PO Box 715 - Postville, IA 52162-0715

Your Touchstone Energy® Cooperative 

PRSR STD
U.S. Postage

PAID
DPC

THE VALUE OF ELECTRICITY



\$5.66

average cost
of a Big Mac®
value meal

\$3.92

average daily
cost of power



Electricity is expressed on a daily basis using EIA 2020 Average U.S. Monthly Residential Bill of \$117.46. Big Mac® is a registered trademark of McDonald's Corporation. McDonald's Corporation does not endorse or sponsor this material.

Sources: Economist.com and EIA, 2020 data.



STAY CONNECTED

Your Touchstone Energy® Cooperative 